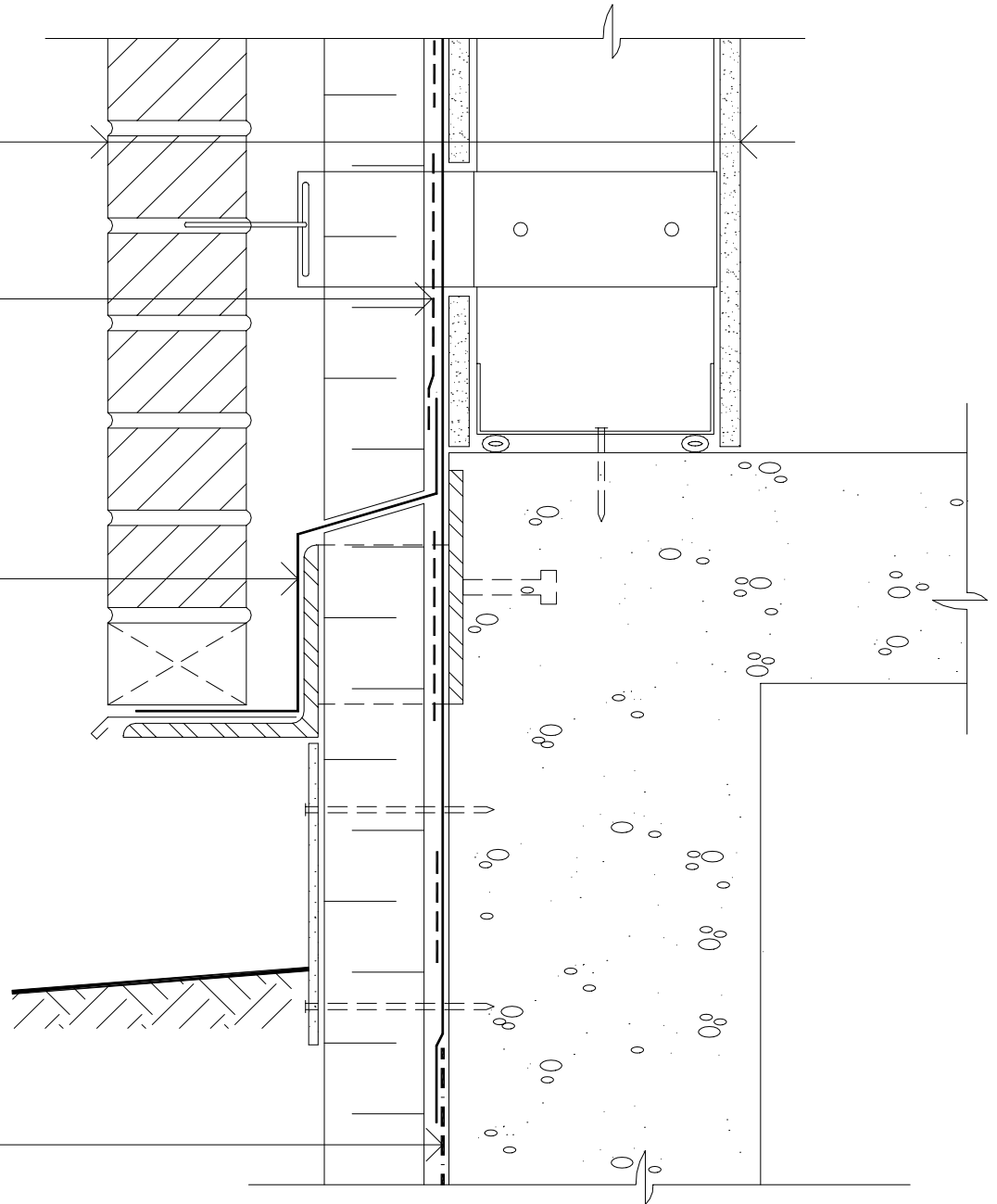


Brick Veneer
 Air Space
 Insulation
 Blueskin® SA or TG
 Exterior Sheathing
 Steel Stud
 Gypsum Board

Air-Bloc 21

Blueskin® TWF
 Thru-Wall Flashing
 Sheet

Bakor waterproofing or
 dampproofing system.



Notes

1. Blueskin TWF self-adhering sheets are used for thru-wall flashing applications. Blueskin TWF is applied to a prepared and primed substrate.
2. Integrate the wall air/vapour barrier system with foundation waterproofing or dampproofing system.
3. When the brick-tie system is installed prior to the Blueskin membrane, cut and fit the membrane around each tie and sealed with Air-Bloc 21.
4. An alternate detail for the thru-wall flashings includes extending the membrane across the top of the floor slab prior to installing the lower track. Turn membrane up face of track prior to fastening interior gypsum board.

Blueskin® SA or Blueskin® TG

**FOUNDATION
 DETAIL**

BRICK VENEER / STEEL STUD WALL

Scale: N.T.S.

Plot: 1:5

Issued: 08-14-97

Revision: 06

AB-10B96

BAKOR

375 Pendant Drive, Unit #2,
 Mississauga, ON L5T 2W9
 10 avenue St. Pierre, Lachine, PQ H8R 1N7