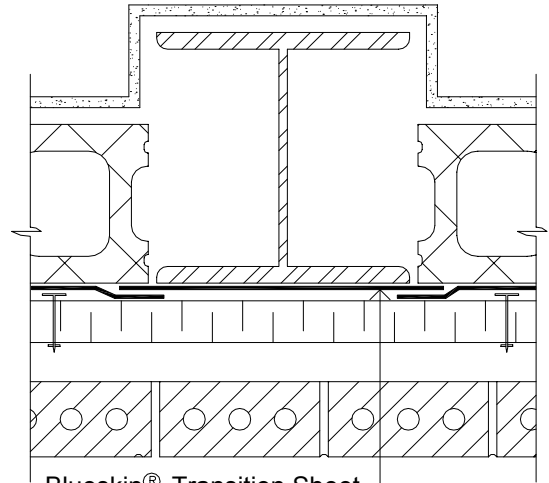


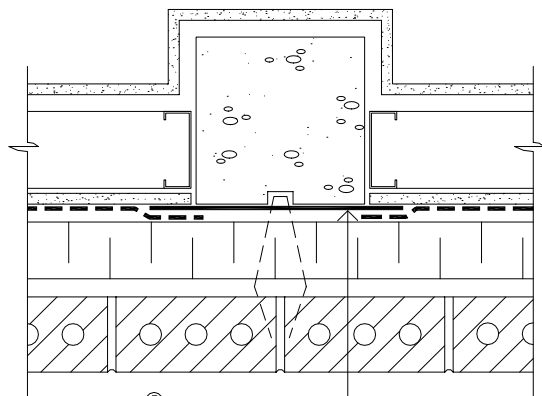
Blueskin® Transition Sheet

**Concrete Column**  
**Blueskin® SA or TG**



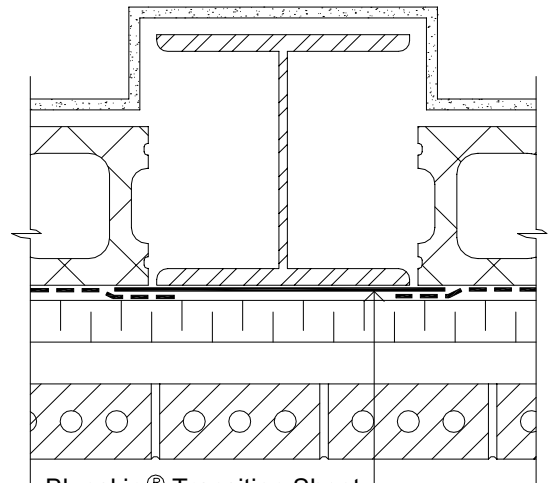
Blueskin® Transition Sheet

**Steel Column**  
**Blueskin® SA or TG**



Blueskin® Transition Sheet

**Concrete Column**  
**Air-Bloc 06, 21 or 32**



Blueskin® Transition Sheet

**Steel Column**  
**Air-Bloc 06, 21 or 32**

Notes

1. Use Blueskin SA or Blueskin TG as a transition sheet at the interface of structural supports and infill wall components, as well as the junction of dissimilar materials, floor slab to wall connections and across shear walls.

Blueskin® SA or Blueskin® TG and  
Air-Bloc 06, 21 or 32

**PLAN DETAILS**

BRICK VENEER / MISC. WALL

Scale: N.T.S.

Plot: 1:10

Issued: 08-14-97

Revision: 06

**AB-17B96**

**BAKOR**

375 Pendant Drive, Unit #2,  
Mississauga, ON L5T 2W9  
10 avenue St. Pierre, Lachine, PQ H8R 1N7