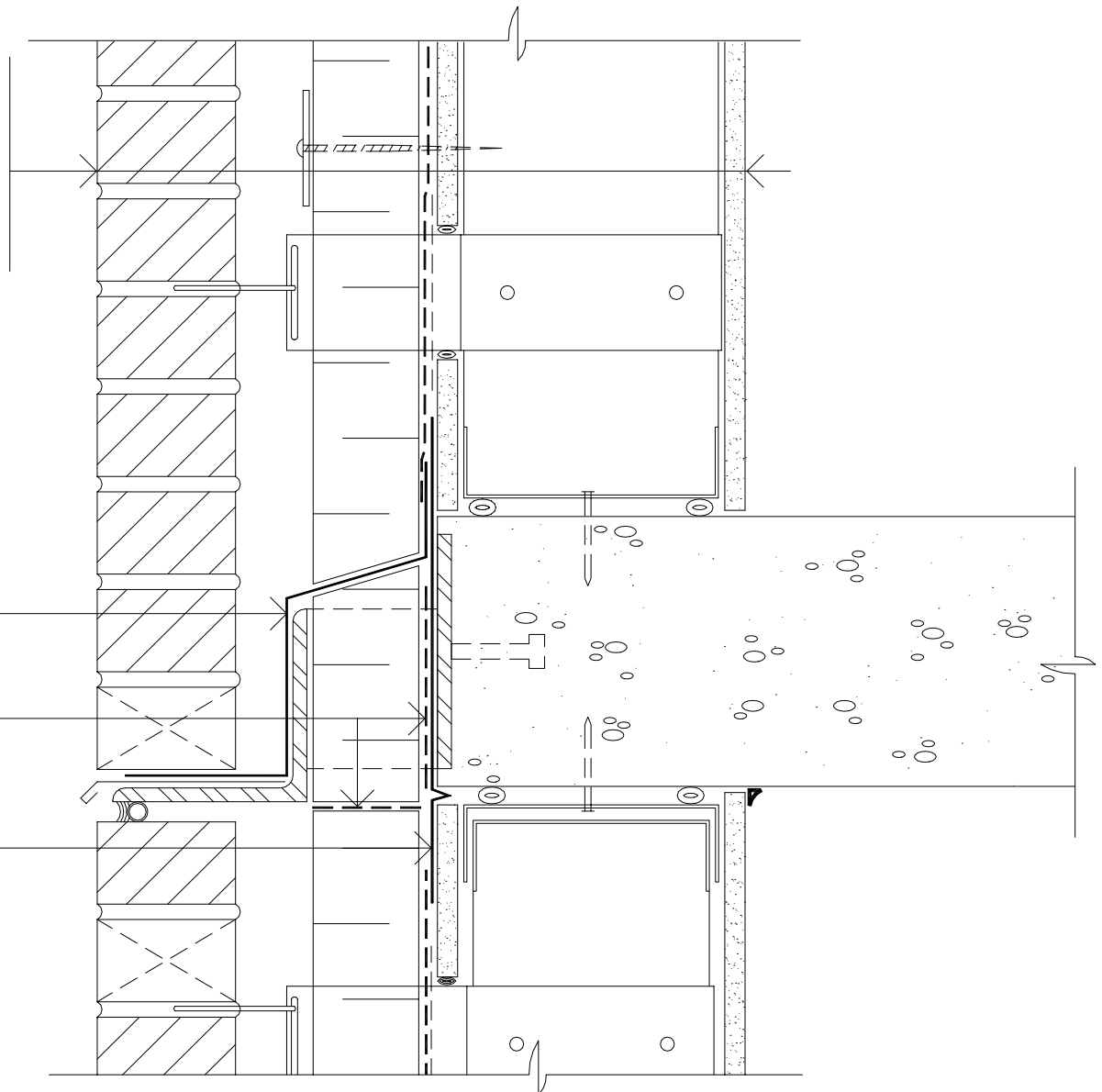


Brick Veneer
 Air Space
 Insulation
 Air-Bloc 06, 21 or 32
 Exterior Sheathing
 Steel Stud
 Gypsum Board

Blueskin® TWF
 Thru-Wall Flashing
 Sheet

Air-Bloc 21

Blueskin® SA
 Transition Sheet



Notes

1. Blueskin TWF is a self-adhering sheet used for thru-wall flashing applications. Blueskin TWF is to be applied to a prepared and primed substrate.
2. Always stop Blueskin flashing membrane back from exterior face of veneer. Extend the drip edge using prepainted metal to suit.
3. An alternate detail for the thru-wall flashings includes extending the membrane across the top of the floor slab prior to installing the lower track. Turn membrane up face of track prior to fastening interior gypsum board.

Air-Bloc 06, 21 or 32

SHELF ANGLE DETAIL

BRICK VENEER / STEEL STUD WALL

Scale: N.T.S.

Plot: 1:5

Issued: 08-14-97

Revision: 06

AB-5B96

BAKOR

375 Pendant Drive, Unit #2,
 Mississauga, ON L5T 2W9
 10 avenue St. Pierre, Lachine, PQ H8R 1N7